



Ans Engineering Group Ltd.

engineering with sustainability

# Company Profile



## **Ans Engineering Group Ltd.**

Project Planning, Design & Construction Management

P.O. Box 78007-00507 Nairobi

Mobile; +254720612649, +254732246065, +254731454809,

E-Mail; [ansengin@gmail.com](mailto:ansengin@gmail.com), [info@ans-engineers.co.ke](mailto:info@ans-engineers.co.ke)

Website: [www.ans-engineers.co.ke](http://www.ans-engineers.co.ke)

# Ans Engineering Group Ltd.

## Contents

Executive Summary Of Consultant's Profile

Mission

Vision

Core Values

Health, Safety And Environmental Management Policy

Our Team

Engineering Service

Selected Client Base

Selected Project List

Company Registration Documents

Contacts

INTEGRATED ENGINEERING &  
CONSTRUCTION SERVICES

# Ans Engineering Group Ltd.

## Executive Summary Of Consultant's Profile

Quality, Sustainability and Safety are at the very centre of all our operations. We believe in quality being a continuous process and routinely

Ans Engineering Group Ltd is a nationally integrated and independent infrastructure development consultants of designers, architects, planners, engineers, environmental specialists, and technical specialists offering a broad range of Professional services.

It is an indigenous owned and managed Kenyan firm of civil and structural engineering involved in engineering designs and construction supervision, operating mainly in the East African countries of Kenya, Uganda and Tanzania. The firm is owned and managed by its directors and is independent of commercial organizations.

In order to broaden the scope of the services available to its clients, and to have the benefit of experience, the firm maintains associations with other consulting groups and other independent consortiums. These associations, secured by either long term or ad hoc agreements, provide, inter alia, for technical co-operation, interchange of staff and joint-venture activities, as well as exposes Apex Systems to considerable experience, and the latest developments in the industry.

The practice was founded in March 2015, as a limited liability company with the majority shares held by the professional engineers of the firm.

After its formation, the firm initially concentrated on buildings. Since then the firm has expanded its engineering designs and construction services in the other types of civil engineering works, including transportation, infrastructure, and effluent treatment. The range of clients has expanded correspondingly to encompass private clients, public departments, and other consulting firms.

The company has had a steady and a gradual growth since inception with the total staff growth rising from 2 in 2015 to 12 to date consultancy and construction services provider. We are offering innovative execution and delivery solutions to its clients in multiple sectors for projects of scale and complexity, whilst managing diverse technological interfaces.

# Ans Engineering Group Ltd.

engineering with sustainability

## Vision

To be a best-in-class integrated engineering consultancy and construction services provider executing projects to world-class standards for our clients and delivering industry benchmarked value to our stakeholders.

## Mission

To achieve excellence in the engineering consultancy and construction services through a proactive culture based on team spirit and the will to deliver against targets, driven by clear accountability and responsibility, and supported by implementation of best practices in project management and achievement of industry-leading standards in health and safety

## Core Values

Quality, sustainability and Safety are at the very center of all our operations. We believe in quality being a continuous process and routinely conduct on-site awareness programs to retain this focus in our project delivery processes. We are focused on delivering value to our customers at every stage of the project. We want to achieve this with our continuous commitment towards:

### **Respect for our people**

We encourage our people to learn and empower them to innovate. We set objective performance measurement criteria to track both individual and project progress

### **Respect for the environment**

We aim to conduct our operations with minimum damage to the environment and optimum energy consumption, keeping waste creation to the minimum and sustainability.

### **Safe operating practices**

We believe every incident prevented is potentially a life saved. We encourage safe operating practices through continuous training and awareness programs.

### **Delivering competitive solutions**

We strive to deliver competitive solutions to meet our clients' expectations and take pride in delivering quality on time.

Quality, Sustainability and Safety are at the very centre of all our operations. We believe in quality being a continuous process and routinely





## Health, Safety and Environmental Management Policy

The management of Ans Engineering Group Ltd recognizes the importance of safety, health and environmental management to the success of the organization. Our staff are vital to the delivery of high quality products and services for our clients. To this end, we are committed to taking all reasonable steps to insure a safe and healthy workplace for all staff, simultaneously acknowledging our responsibility for the protection of the environment.

Our goal is design for a safe workplace for all staff and reduce the potential for injuries to zero. All employees will benefit from the knowledge that their work environment provides protection from injury. This will allow each of us to focus on providing the highest level of quality in the products and services we supply. Each of us has responsibilities and are accountable for various aspects of Ans Engineering Group Ltd's program.

**Senior Management** - The organization and its senior management commits to the development of the program, availability of financial resources, monitoring program progress, training and contracting of the necessary services and staff, rehabilitation and recognition and at a minimum meeting of legislative requirements.

**Managers and Supervisors** - Managers and supervisors are responsible for implementation of programs, reinforcement, monitoring and coaching of employees. They are additionally responsible for identification and control of hazards in the workplace.

**Employees** - Each employee has a responsibility to participate in the company safety program, attend training sessions, inform management of HSE concerns or hazards and monitor their fellow workers and third party HSE performance.

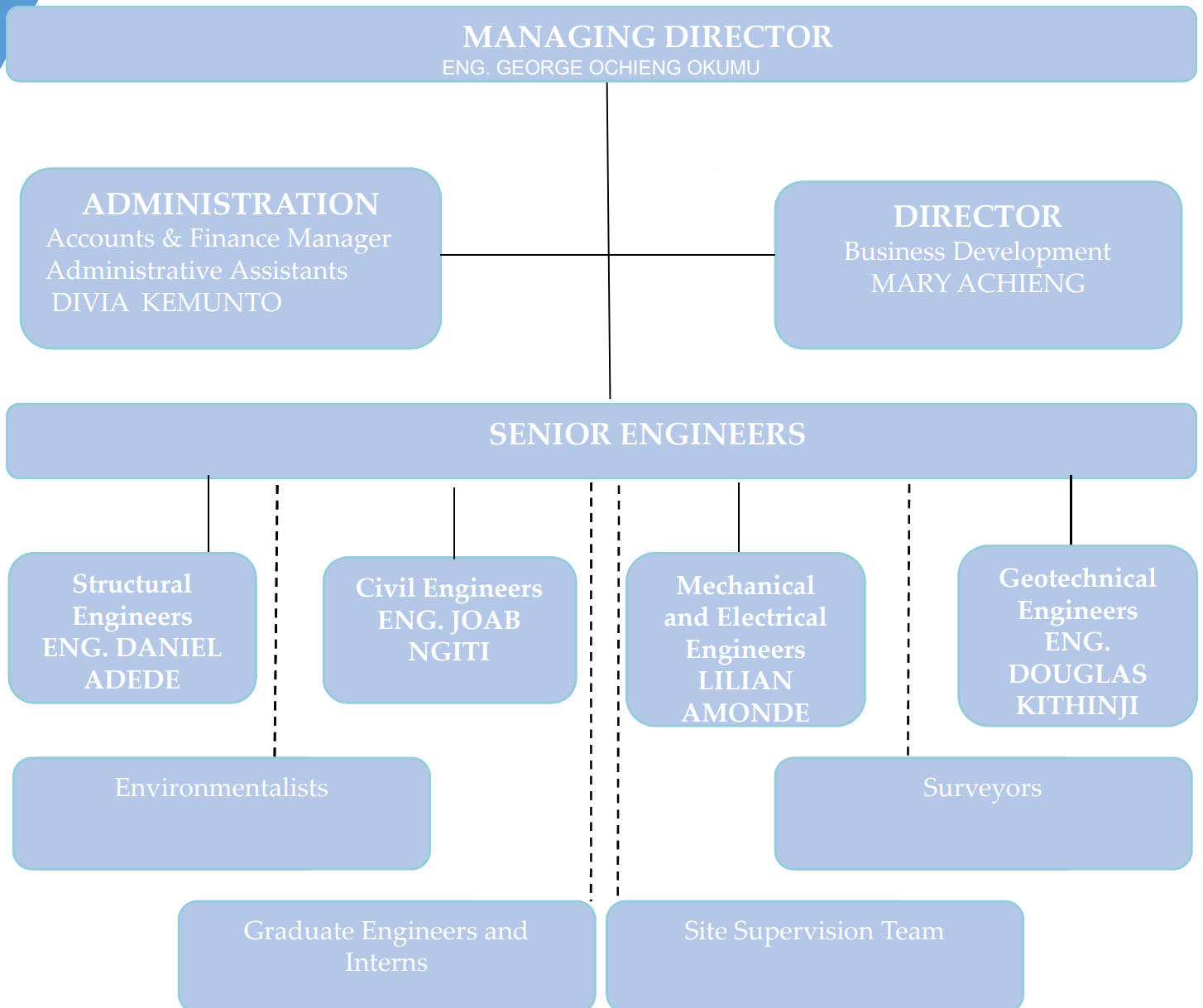
A large, solid blue geometric shape, resembling a parallelogram or a trapezoid, is positioned in the top-left corner of the page. It is oriented diagonally, with its top-left corner pointing towards the top-left of the page and its bottom-right corner pointing towards the center of the page.

Our Team

# Ans Engineering Group Ltd.

engineering with sustainability

## OUR TEAM



# Ans Engineering Group Ltd.

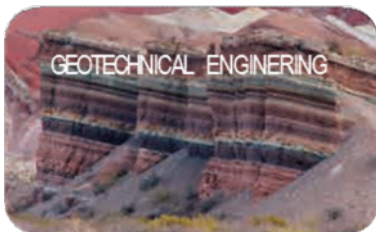
engineering with sustainability

## Engineering Service

Ans Engineering Group Ltd, since 2015 has established a reputation for providing high value engineering solutions and assisting sophisticated engineering design in the competitive market. This reputation has been developed over the years by building a wealth of experience and engineering capabilities across a range of industries, working with various infrastructure projects with a detailed design capability across all types of civil structural, engineering and construction works.

Thesdesign processes ensure strict compliance with code requirements ensuring designs are for purpose, are fully optimized and reflect our approach to engineering.

Quality, Sustainability and Safety are at the very centre of all our operations. We believe in quality being a continuous process and routinely



# Ans Engineering Group Ltd.

engineering with sustainability

## Resources

Quality, Sustainability and Safety are at the very centre of all our operations. We believe in quality being a continuous process and routinely

The firm maintains an equipped Operating Offices in Nairobi for the routine day- to-day Engineering Analysis and design works.

In addition to the permanent staff, the firm maintains standing agreements with various external experts to ensure that relevant expertise is made available within the shortest possible period for contracted assignments.

In order to enhance the firm's efficiency in both technical and in the routine office work the company has over the years invested in computer equipment and relevant software.





# Ans Engineering Group Ltd.

engineering with sustainability

## Resources

### Office Infrastructure

The Company has a spacious office premise, immaculately furnished to provide the working environment conducive for design and development work. All the necessary office infra-structural facilities are available in-house. These include PC workstations, drawing/document printing, plotting & scanning facilities, CD writing facility for periodic back-up, and the modern communication systems and vehicles. The installed uninterrupted power supply system, in case of sudden power failure, supports all the modern gadgets and allows carrying on urgent works.

### Human Resource

As a professional service organization, we at AEC recognize that our staff is our most important resource. Our engineers, technicians, and support personnel have the expertise needed to address a broad spectrum of engineering services we offer. The Company also has highly experienced professionals as associates to assist its engineering team in specialised areas.

### Computer Aided Design and Drafting (CADD)

The use of computers in the Company has commenced way back since 2015. The application software for analysis and design, preparation of drawings, project planning and scheduling and preparation of estimates are being used regularly. The use of computers has enhanced greatly the productivity and the quality of service.

The Company has customized CADD to serve its needs. Symbol libraries, macros, and standard details have made the basic CADD package substantially more productive. The Company has developed and implemented layering convention, drafting standards, and standard constructional details for all disciplines.

Quality, Sustainability and Safety are at the very centre of all our operations. We believe in quality being a continuous process and routinely





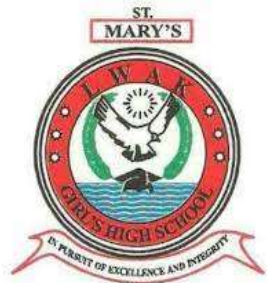
# Ans Engineering Group Ltd.

engineering with sustainability

## Selected Client Base



Quality, Sustainability and Safety are at the very centre of all our operations. We believe in quality being a continuous process and routinely



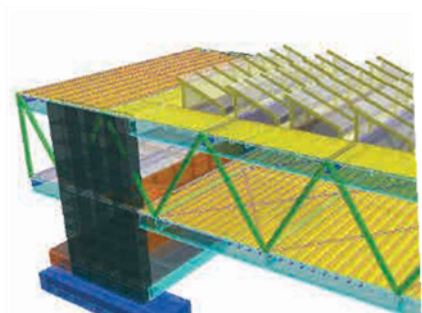
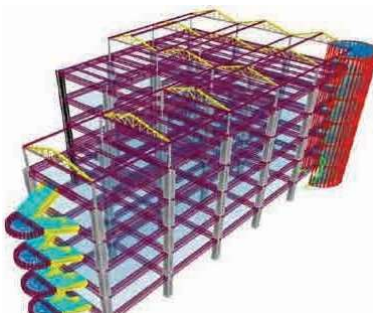
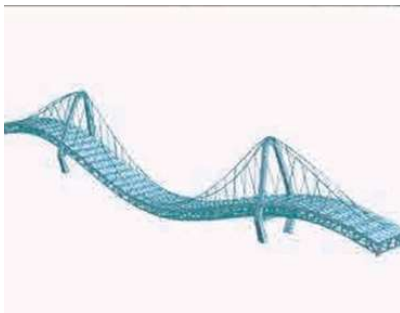
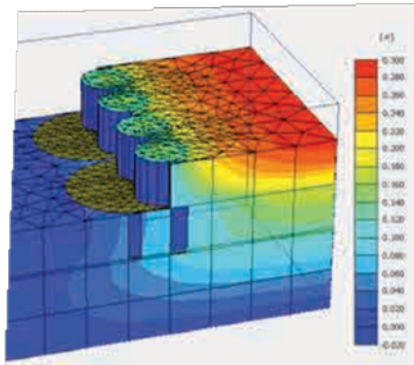
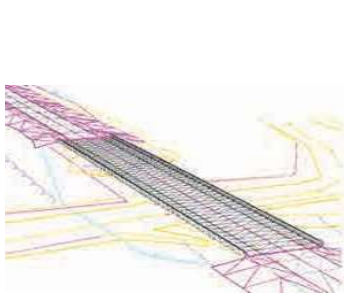
# Ans Engineering Group Ltd.

engineering with sustainability



Quality, Sustainability and Safety are at the very centre of all our operations. We believe in quality being a continuous process and routinely

## Selected Project List



# Ans Engineering Group Ltd.

engineering with sustainability

Feasibility Studies, Designs, Design Reviews and Construction Supervision of BUILDINGS STRUCTURES.						
Item	Project	Position	Client	Firms	Contract Sum (Ksh)	Status
1	Structural and Civil Engineering Design Review and Construction Supervision of the Proposed Factory Development On Plot L R No 28867/1 In Tatu City	Civil / Structural Engineer	Poenystar Kenya Limited	Ans Engineering Group Ltd	600 million	On-going
2	Structural and Civil Engineering Design Review and Construction Supervision of the Proposed Brickford Apartments In Kilimani	Civil / Structural Engineer	Brickford Heights Ltd.	Ans Engineering Group Ltd	969 million	On-going
3	Structural and Civil Engineering Design and Construction Supervision of the Proposed Rachel Heights Kericho	Civil / Structural Engineer	E Korir	Ans Engineering Group Ltd	75 million	On-going
4	Structural and Civil Engineering Design and Construction Supervision of the Proposed Bantu Homes In Kitengela	Civil / Structural Engineer	Kindred Ltd.	Ans Engineering Group Ltd	400 million	On-going
5	Structural and Civil Engineering Design and Construction Supervision of the Migaa Golf Course Residence	Civil / Structural Engineer	Hagos Tedasse Gebremeskel	Ans Engineering Group Ltd	120 million	On-going
6	Structural and Civil Engineering Design and Construction Supervision of the Proposed Height Apartments In Ol Kalou	Civil / Structural Engineer	Martin Karukwa Maina	Ans Engineering Group Ltd	58 million	Completed
7	Structural and Civil Engineering Design and Construction Supervision of the Proposed Utawala Shopping Complex	Civil / Structural Engineer	Martin Karukwa Maina	Ans Engineering Group Ltd	130 million	On-going
8	Structural and Civil Engineering Design and Construction Supervision of the Proposed Baha'i House Of Worship, Matunda	Civil / Structural Engineer	National Spiritual Assembly Of Baha'i Of Kenya	Ans Engineering Group Ltd	200 million	Completed
9	Structural and Civil Engineering Design and Construction Supervision of the Kenya Assemblies of God Church Mwea	Civil / Structural Engineer	Kenya Assemblies of God Church Mwea	Ans Engineering Group Ltd	150 million	On-going
10	Structural and Civil Engineering Design and Construction Supervision of the St. Anne Catholic Church Karura	Civil / Structural Engineer	St. Anne Catholic Church Karura	Ans Engineering Group Ltd	50 million	On-going
11	Structural and Civil Engineering Design and Construction Supervision of the Swine Farm, Weithaga, Muranga	Civil / Structural Engineer	Weithaga Farm Ltd	Ans Engineering Group Ltd	10 million	Completed
12	Structural and Civil Engineering Design and Construction Supervision of the Proposed 36m High Mast, Tatu City	Civil / Structural Engineer	Tatu City	Ans Engineering Group Ltd	30 million	Completed
13	Structural Integrity and Condition Assessment for Laboratory Building, Asumbi Girls High School	Civil / Structural Engineer	Asumbi Girls High School	Ans Engineering Group Ltd	-	Completed
14	Structural Integrity and Condition Assessment for Woodley Medical	Civil / Structural Engineer	Kenuget Publishers	Ans Engineering Group Ltd	-	Completed

# Ans Engineering Group Ltd.


engineering with sustainability


## Structural Engineering

Structural engineering is one of the core of the company. Our experienced engineers provide full service and high value structural engineering design. Our team consists of an expert and engineers that has been worked in various technically demanding projects such as suspension bridges, large industrial plant and high-rise buildings.

Quality, Sustainability and Safety are at the very centre of all our operations. We believe in quality being a continuous process and routinely


Sport centre or stadium 

Residential building 

Temporary or permanent camp and office building 

Commercial/Industrial building 

Conveyor handling structure 

Multi storey building 

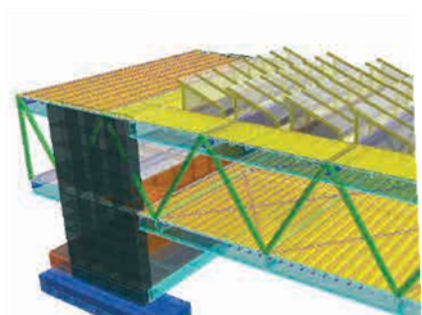
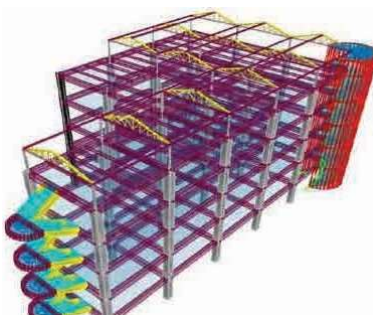
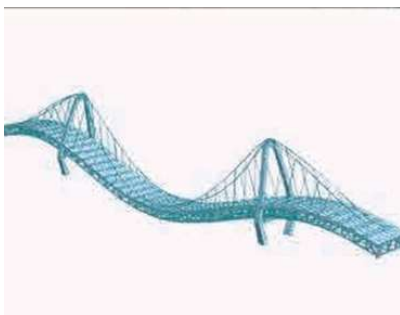
Telecommunication tower 

Steel structure 

Warehouse Complexes 

Concrete and Precast structure 

Bridge and overpass structure 



# Ans Engineering Group Ltd.

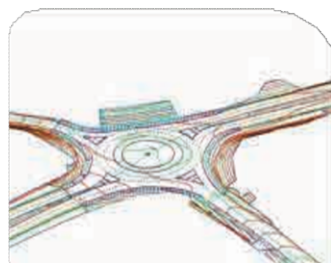
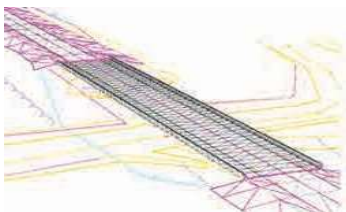
engineering with sustainability

## Road Engineering

We can assist with design and planning aspects of your transport Engineering projects. For clients with road schemes, bridges and parking we develop temporary and permanent works solutions and advise on construction.

Quality, Sustainability and Safety are at the very centre of all our operations. We believe in quality being a continuous process and routinely

- PLANNING - route selection, horizontal and vertical alignment design, geotechnical assessment, earthworks assessment, soil reusability and borrow pit studies.
- CUT & FILL - slope stability, retention solutions, soil nails, rock bolts, rock stability and excavability and reinforced slopes, develop a Mass Haul Diagram.
- GROUND IMPROVEMENT - soft ground engineering, deep soil mixing, and review of soils and aggregates available and their potential for utilizing soil stabilizing techniques incorporating lime and cement binders.
- BRIDGES - upper structure, pier, foundations, abutments and retaining wall design.
- ROAD DESIGN SERVICES - pavement design, temporary works design, alternative designs and value engineering.
- CHECKING - site supervision, bridge inspections, independent checking.





# Ans Engineering Group Ltd.

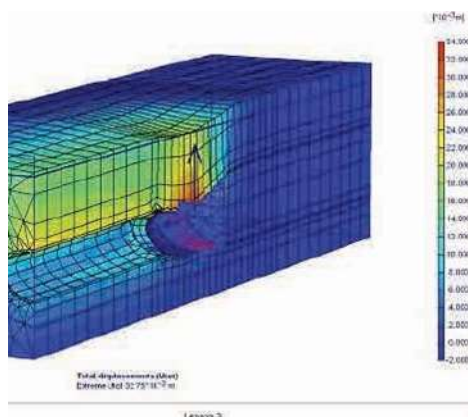
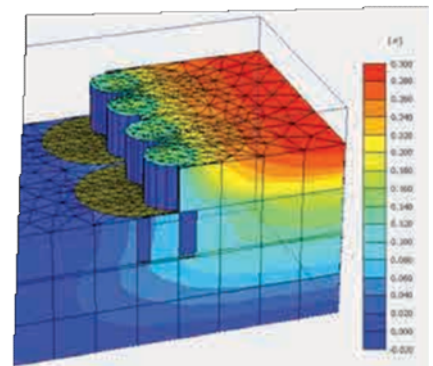
engineering with sustainability

## Geotechnical Engineering

We assist our Client to carry out an appropriate geotechnical studies for infrastructure development. Our services mainly divided into geotechnical surveys and geotechnical engineering design. Our geotechnical survey team is handled by vastly experienced engineers having worked on various surveys and soil investigations projects, while our team of engineers and principals have worked on large and technically challenging national infrastructure projects.

- Site investigations and supervision (Drilling & Sampling, SPT, CPT or CPTU, etc)
- Soil and rock laboratory testing (index properties and engineering properties)
- Earthwork engineering for industrial plants, utilities, and commercial development
- Landslide & Retaining wall and deep excavation

Quality, Sustainability and Safety are at the very centre of all our operations. We believe in quality being a continuous process and routinely





# Ans Engineering Group Ltd.

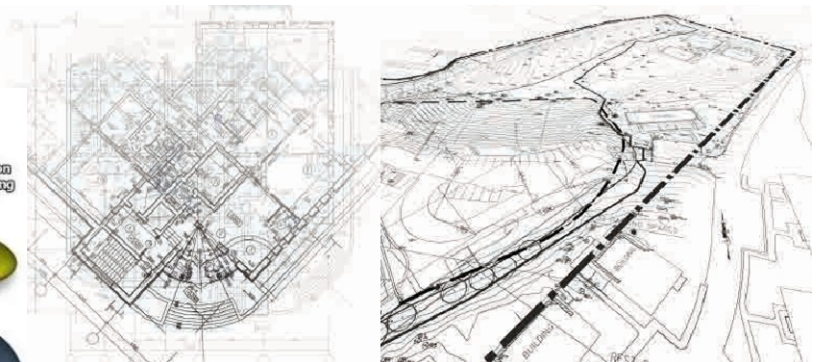
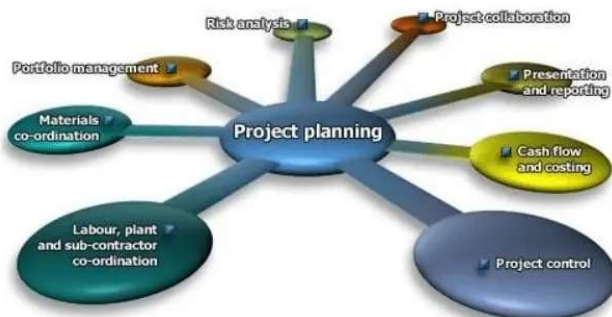
engineering with sustainability

## Construction Management

When it comes to construction management, we take pride in our ability to meet our clients' needs by offering consistent high standard service and outcomes. We assist our client to ensure the efficient outcome for your projects. Our experienced team provides real-world, cost-effective solutions to the everyday challenges that owners, contractors face throughout construction process. Starting from the concept to the project closeout, we assist our client projects to meet their specifications, requirements, and to mitigate potential problems.

Quality, Sustainability and Safety are at the very centre of all our operations. We believe in quality being a continuous process and routinely

- Construction management
- Construction supervision, Inspection, and quality assurance Review of existing engineering data
- Project scheduling
- Man power and equipment productivity analysis Cost estimating and evaluation
- Tender document and evaluation Change order management
- Construction design review



# Ans Engineering Group Ltd.

engineering with sustainability

## Experience: Residential Buildings

### Brickford Apartments, Kilimani, Nairobi



**Project Description:**

Brickford Apartments is a 17 – Storey Residential Apartments Building with all associated amenities

**Project Assignments:**

Civil and Structural Design Review and Construction Supervision

**Client:**

Brickford Heights Ltd.

**Project Cost:**

KSH.969 Million

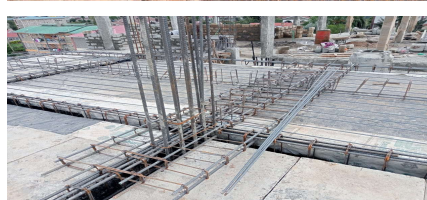
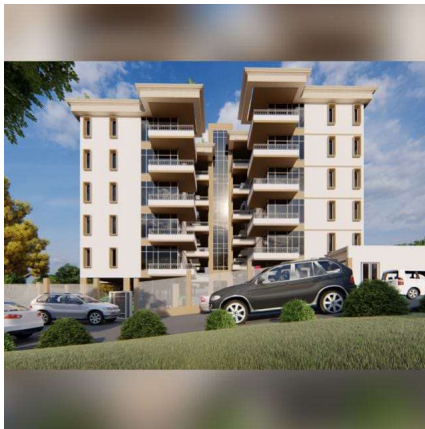
**Associate Consultants:**

Archscape Architects

**Project Status:**

On-going

### Rachel Heights, Kericho



**Project Description:**

Rachel Heights is a 6 –Storey Residential Apartments Building

**Project Assignments:**

Civil and Structural Preliminary Design, Detailed Design and Construction Supervision

**Client:**

Mr. Erick Korir

**Project Cost:**

KSH. 75 Million

**Associate Consultants:**

Intrique Architects

**Project Status:**

On-going



# Ans Engineering Group Ltd.

engineering with sustainability

Experience: Industrial

## Factory Development On Plot L R No 28867/1 In Tatu City



### Project Description:

Proposed Factory Development On Plot L R No 28867/1 In Tatu City with all associated amenities

### Project Assignments:

Civil and Structural Design Review and Construction Supervision

### Client:

Poenystar Kenya Limited

### Project Cost:

KSH.600 Million

### Associate Consultants:

Space By Design Architects

### Project Status:

On-going





# Ans Engineering Group Ltd.

engineering with sustainability

## Experience: Residential Buildings



### Bantu Homes, Kitengela

**Project Description:**

The project is a 24 No. Residential Massionettes with Amenities in a Gated Community Building

**Project Assignments:**

Civil and Structural Preliminary Design, Detailed Design and Construction Supervision

**Client:**

Kindred Ltd.

**Project Cost:**

KSH. 400 Million

**Associate Consultants:**

Roundtable Architects

**Project Status:**

On-going



### Migaa Golf Course Residence, Kiambu



**Project Description:**

Migaa Golf Course Residence project is a 6 No. Residential Massionettes with Amenities in a Gated Community Building

**Project Assignments:**

Civil and Structural Preliminary Design, Detailed Design and Construction Supervision

**Client:**

Hagos Tadesse Gebremeskel

**Project Cost:**

KSH. 120 Million

**Associate Consultants:**

Studio Icon Associates

**Project Status:**

On-going

# Ans Engineering Group Ltd.

engineering with sustainability

## Experience: Residential Buildings

### Height Apaetments,

### Ol-Kalou



**Project Description:**

The project is a 6 –Storey Residential Apartments Building

**Project Assignments:**

Civil and Structural Preliminary Design, Detailed Design and Construction Supervision

**Client:**

Martin Karukwa Maina

**Project Cost:**

KSH. 75 Million

**Associate Consultants:**

Archscape Architects

**Project Status:**

On-going



# Ans Engineering Group Ltd.

engineering with sustainability

## Experience: Commercial Developments

### Utawala Shopping Complex, Utawala



**Project Description:**

Utawala Shopping Complex is a mixed use Commercial Centre with Office Blocks

**Project Assignments:**

Civil and Structural Preliminary Design, Detailed Design and Construction Supervision

**Client:**

Empire Developers

**Project Cost:**

KSH. 130 Million

**Associate Consultants:**

Archscape Architects

**Project Status:**

On-going



# Ans Engineering Group Ltd.

engineering with sustainability

Experience: Education Centres

## BAHA'I HOUSE OF WORSHIP, Matunda

Soy



### Project Description:

This project is a Educational Centre for the Youth

### Project Assignments:

Civil and Structural Preliminary Design, Detailed Design and Construction Supervision

### Client:

NATIONAL SPIRITUAL ASSEMBLY OF BAHAI OF KENYA  
P.O. BOX 47562-00100 NAIROBI

### Project Cost:

KSH. 200 Million

### Associate Consultants:

Archscape Architects

### Project Status:

Ongoing



# Ans Engineering Group Ltd.

engineering with sustainability

Experience: Religious Centers

## Kenya Assemblies of God Church Mwea



**Project Description:**

This project is a Church Building

**Project Assignments:**

Civil and Structural Preliminary Design, Detailed Design and Construction Supervision

**Client:**

KAG Mwea

**Project Cost:**

KSH. 150 Million

**Associate Consultants:**

Arris Associates

**Project Status:**

Ongoing

## St. Anne Catholic Church Karura



**Project Description:**

This project is a Office Complex with Conference Facilities

**Project Assignments:**

Civil and Structural Preliminary Design, Detailed Design and Construction Supervision

**Client:**

St. Anne Catholic Church Karura

**Project Cost:**

KSH. 50 Million

**Associate Consultants:**

Archscape Architects

**Project Status:**

Completed [2022]



# Ans Engineering Group Ltd.

engineering with sustainability

## Experience: Agricultural Structures

### Swine Farm, Weithaga, Muranga



**Project Description:**

The project is a 200 capacity swine farm with associated structures

**Project Assignments:**

Civil and Structural Preliminary Design, Detailed Design and Construction Supervision

**Client:**

Weithaga Farm Ltd.

**Project Cost:**

KSH. 10 Million

**Associate Consultants:**

Roundtable Architects

**Project Status:**

Completed

# Ans Engineering Group Ltd.

engineering with sustainability

## Experience: Communication Towers



### 36m High Mast, Tatu City

**Project Description:**

The project is a 36m High Communication Mast Tatu Industrial Park

**Project Assignments:**

Civil and Structural Preliminary Design, Detailed Design and Construction Supervision

**Client:**

Tatu City

**Project Cost:**

KSH. 3 Million

**Associate Consultants:**

Archscope Architects

**Project Status:**

Complete (2023)



# Ans Engineering Group Ltd.

engineering with sustainability

## Experience: Structural Integrity Assessment

### SIA for Laboratory Building, Asumbi Girls High School



**Project Description:**

Structural Integrity Assessment for the Laboratory Building for the proposed addition of One Floor

**Project Assignments:**

Structural Integrity Assessment

**Client:**

Asumbi Girls High School

**Project Status:**

Completed (2020)

### SIA for Woodley Medical Centre, Adams Arcade, Nairobi



**Project Description:**

Structural Integrity Assessment for the Main Hospital Building for completion of Construction Works

**Project Assignments:**

Structural Integrity Assessment

**Client:**

KENUGET PUBLISHERS  
P.O BOX 38835-00523,  
NAIROBI

**Project Status:**

Completed (2022)



# Ans Engineering Group Ltd.

engineering with sustainability

## Experience: Structural Integrity Assessment

### SIA for Residential House, Roysambu, Nairobi



**Project Description:**

Structural Integrity Assessment for the Residential Building to remedy for Post Construction Defects

**Project Assignments:**

Structural Integrity Assessment

**Client:**

MR. & MRS. ISAAC NJORO  
OF P.O BOX 9872 00100,  
NAIROBI

**Project Status:**

Completed (2020)



# Ans Engineering Group Ltd.

engineering with sustainability

## Experience: Roadworks

### Upgrade Of Fairfield Gardens Access Road to Bitumen Standards



**Project Description:**

The project comprised of designs and construction to bitumen standards of access road and Drainage Works from Syokimau town to Fairfield Gardens

**Project Assignments:**

Civil and Structural Preliminary Design, Detailed Design and Construction Supervision

**Client:**

Fairfield Gardens Development in association with PDN NAIROBI

**Project Status:**

Completed (2020)

# Ans Engineering Group Ltd.

engineering with sustainability

## Experience: Water & Waste Water Engineering Design and Construction of Boreholes within Athi Water Services Board Area Of Jurisdiction



### **Project Description:**

The project comprised of designs and construction supervision of Prestressed Steel Tanks Towers to boreholes for Thika, Kimucu Primary Schools and St Teresas Girls Eastleigh

### **Project Assignments:**

Civil and Structural Preliminary Design, Detailed Design and Construction Supervision

### **Client:**

East African Engineering  
Consultants  
NAIROBI

### **Project Status:**

Completed (2020]

# Ans Engineering Group Ltd.

engineering with sustainability



Quality, Sustainability and Safety are at the very centre of all our operations. We believe in quality being a continuous process and routinely

## COMPANY LEGAL DOCUMENTS



# Ans Engineering Group Ltd.

engineering with sustainability

Certificate of Incorporation





**Ans Engineering Group Ltd.**  
engineering with sustainability

CR12



**Ans Engineering Group Ltd.**

engineering with sustainability

Tax Registration Certificate



**Ans Engineering Group Ltd.**

engineering with sustainability

**Tax Compliance Certificate**



**Ans Engineering Group Ltd.**

engineering with sustainability

Business Registration Permit



# Ans Engineering Group Ltd.

engineering with sustainability

## OUR OFFICE

Lunga Lunga Square, 2<sup>nd</sup> Floor, Room No.225  
Lunga Lunga Road  
Nairobi  
Kenya

## CONTACTS

Telephone

: +254 720 612 649

: +254 732 246 065

+254 731 454 809

Email : [info@ans-engineers.co.ke](mailto:info@ans-engineers.co.ke)

Website : [www.ans-engineers.co.ke](http://www.ans-engineers.co.ke)